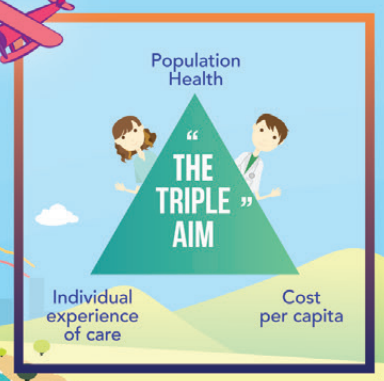




RIVER OF LIFE™

Shaping Our New Model of Care Together



NHG's River of Life framework is designed to meet evolving healthcare needs now and into the future. We go beyond an individual's health status and take into account the determinants of health – socio-economic, environmental, lifestyle, demographics, and culture – to predict risks, care needs, and resource utilisation of the population under our care.

The River of Life is a community of stakeholders, focused on our five Segments of Care - Living Well, Living with Illness, Crisis and Complex Care, Living with Frailty, and Leaving Well.



PEOPLE ~ Renewal

KNOWLEDGE ~ Learning

NHG CORE VALUES

SYSTEM HEALTH

Members of NHG:

- Tan Tock Seng Hospital
- Khoo Teck Puat Hospital
- Woodlands Health Campus
- INSTITUTE of MENTAL HEALTH
- Yishun Community Hospital
- National Healthcare Group POLYCLINICS
- NATIONAL SKIN CENTRE
- National Centre for Infectious Diseases
- Admiralty Medical Centre
- DIAGNOSTICS
- PHARMACY
- NHG COLLEGE
- EYE INSTITUTE
- I-HEALTH
- PCA PRIMARY CARE ACADEMY
- CMT
- IGA Institute of Geriatrics and Active Ageing

Designed by Kenneth Ng, NHG Group Corporate Communications, October 2018 (adapted from Central Health Model of Care by Tan How Sun, Tan Tock Seng Hospital, June 2018). This diagram is meant for NHG and its staff for use in their work. It is not to be reproduced elsewhere for other purposes without the permission of NHG Group Corporate Communications.

Version 1.0, 22 October 2018
© NHG Group Corporate Communications