

FAILURE MODES, EFFECTS & ANALYSIS (FMEA)

Reaping Wisdom from Failure



ABOUT THE WORKSHOP

Failure Modes, Effects and Analysis (FMEA) is a team-based, systematic and proactive approach that is used to evaluate a process and / or product.

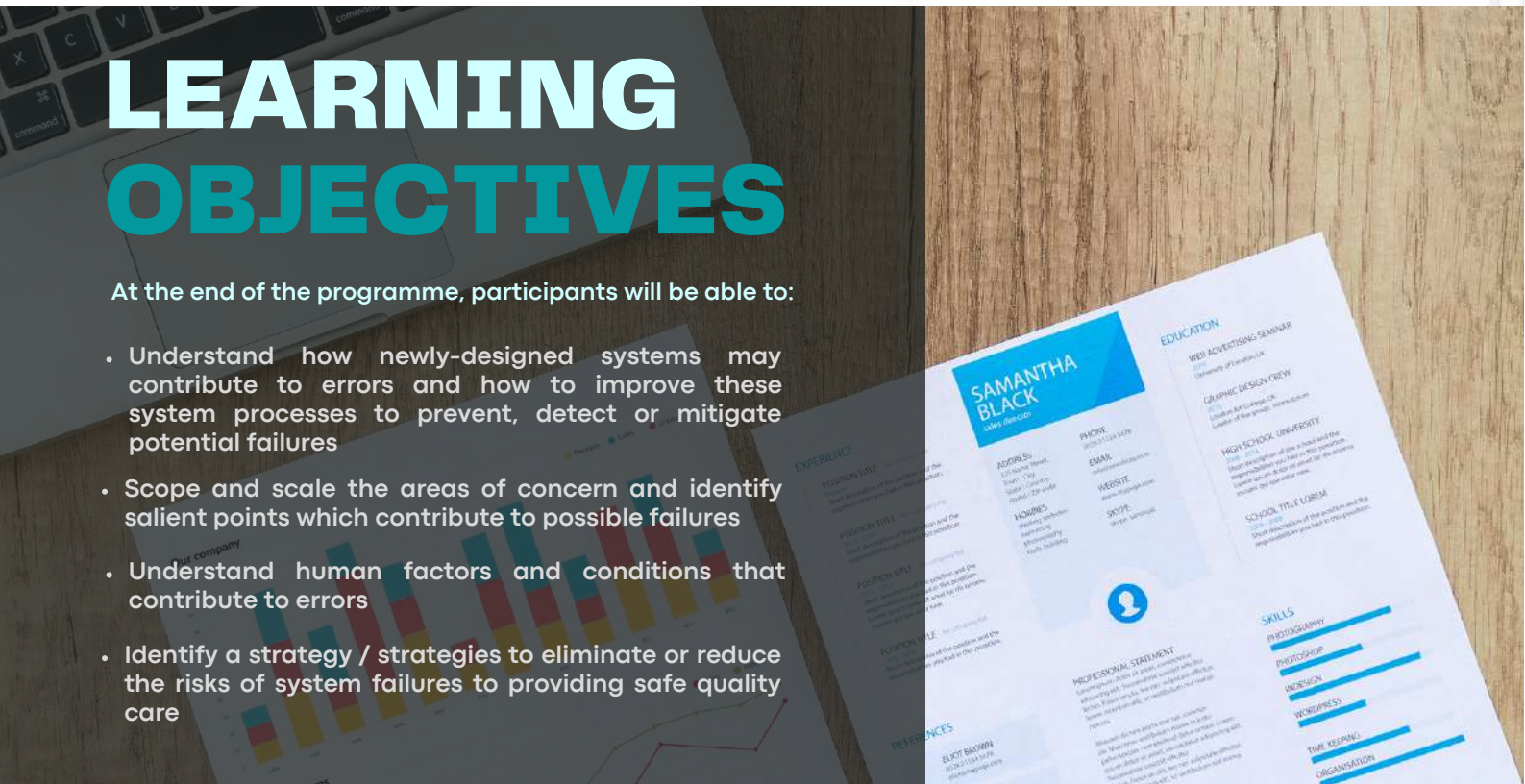
It helps you to identify where and how a process might fail, as well as assess the relative impact of different failures before they happen.

It is particularly useful in evaluating a new process or product for possible failure prior to its implementation or use and in assessing the impact of a proposed change to an existing system/situation/state.

LEARNING OBJECTIVES

At the end of the programme, participants will be able to:

- Understand how newly-designed systems may contribute to errors and how to improve these system processes to prevent, detect or mitigate potential failures
- Scope and scale the areas of concern and identify salient points which contribute to possible failures
- Understand human factors and conditions that contribute to errors
- Identify a strategy / strategies to eliminate or reduce the risks of system failures to providing safe quality care



Target Audience

Administrators and Healthcare Professionals (doctors, nurses, allied health professionals and ancillary staff) who want to take a proactive approach in failure prevention and creating reliable systems.

Pre-requisites

There are no pre-requisites for this course.

Course Duration

1 day

Scan the QR code for more information

